

The Pathology Company



# ASP6025 High Performance Tissue Processor

# Focus on Quality.

Because you are trusted with human tissue, quality always comes first.

That's why the primary focus of the ASP6025 tissue processor is to ensure all your specimens receive optimal processing. A familiar interface lets you easily set-up runs correctly, and you can be confident that intelligent automation is constantly monitoring and protecting critical reagents.

## Deliver diagnostic clarity

### Simplicity

A straightforward touchscreen interface means, ASP6025 tissue processor operators will find it easy to perform critical operations.

### Confidence

With built-in sensors the ASP6025 tissue processor measures the concentration of each alcohol to ensure the optimal sequence.

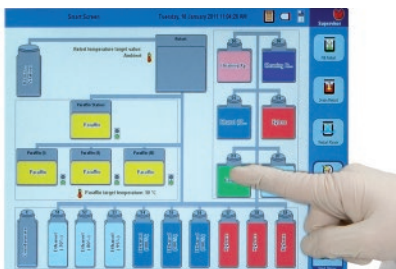
### Protection

The unique ParaLast system reduces paraffin contamination during xylene-free protocols.

### Reduce operator error

### Optimize reagents and processing quality

### Eliminate contaminants



Reagent Status Tuesday, 1 March 2011 12:47 PM

Station	Reagent	Concentration	Cycle	Exchanged	Status	Concentration	Exchanged	Supply	Concentration
01	Formalin	10%	0	0	Full	0	0	0	0
02	Alcohol (70%)	0	0	0	Full	0	0	0	0
03	Alcohol (80%)	0	0	0	Full	0	0	0	0
04	Alcohol (90%)	0	0	0	Full	0	0	0	0
05	Alcohol (100%)	0	0	0	Full	0	0	0	0
06	Xylene	0	0	0	Full	0	0	0	0
07	Xylene	0	0	0	Full	0	0	0	0
08	Xylene	0	0	0	Full	0	0	0	0
09	Xylene	0	0	0	Full	0	0	0	0
10	Paraffin	0	0	0	Full	0	0	0	0
11	Cleaning Xylene	0	0	0	Full	0	0	0	0
12	Cleaning Xylene	0	0	0	Full	0	0	0	0
13	Cleaning Xylene	0	0	0	Full	0	0	0	0
14	Cleaning Xylene	0	0	0	Full	0	0	0	0
15	Cleaning Xylene	0	0	0	Full	0	0	0	0
16	Paraffin	0	0	0	Full	0	0	0	0
17	Paraffin	0	0	0	Full	0	0	0	0
18	Paraffin	0	0	0	Full	0	0	0	0
19	Paraffin	0	0	0	Full	0	0	0	0
20	Paraffin	0	0	0	Full	0	0	0	0



## Focus on Specimen Safety.



When a critical diagnosis depends on a single specimen, you need to be confident that your tissue processor will care for that specimen as much as you do. The ASP6025 tissue processor gives you this confidence with advanced specimen protection.

**Protect the patient behind the specimen**

### Seeing is believing

Quickly check that your specimens are fully covered thanks to the simple addition of a retort viewing window.

### Unstoppable

Built-in battery backup ensures specimens are covered with the most appropriate reagent, even if your lab suffers a complete power failure.

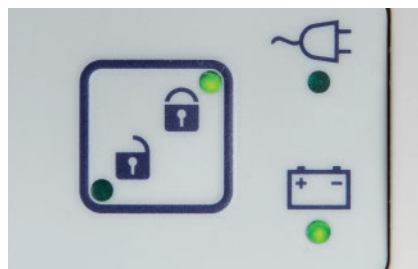
### A new level of support

Find and eliminate problems before they occur. The Leica RemoteCare service provides constant support.

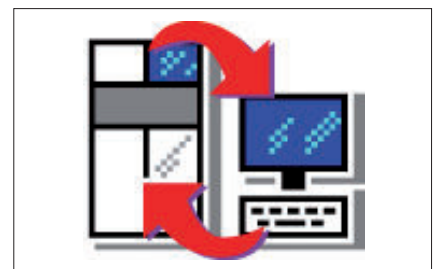
### Eliminate hidden risks



### Autostart after power-failure recovery



### Identify problems before they damage tissue



# Focus on **Productivity.**

Increase productivity and your existing resources will help more patients.

With speed, flexibility, reduced up-keep, and in-process reagent exchanges, the ASP6025 tissue processor delivers everything you need to set your laboratory on the path to Lean Histology. Plus, staff will appreciate the ASP6025 tissue processor protecting their health with clean technology that reduces xylene and exposure to retort vapors.

## Create a Lean Histology laboratory

### Fast

Ensure patients get critical results sooner. The ASP6025 is a rapid processor with a unique pre-melt paraffin station that helps avoid delays.

### Reduce patient anxiety



### Flexible

With xylene and low-temperature xylene-free operation along with rapid, validated protocols, the ASP6025 tissue processor is ready and waiting for any request from your pathologists.

### Be prepared for any request

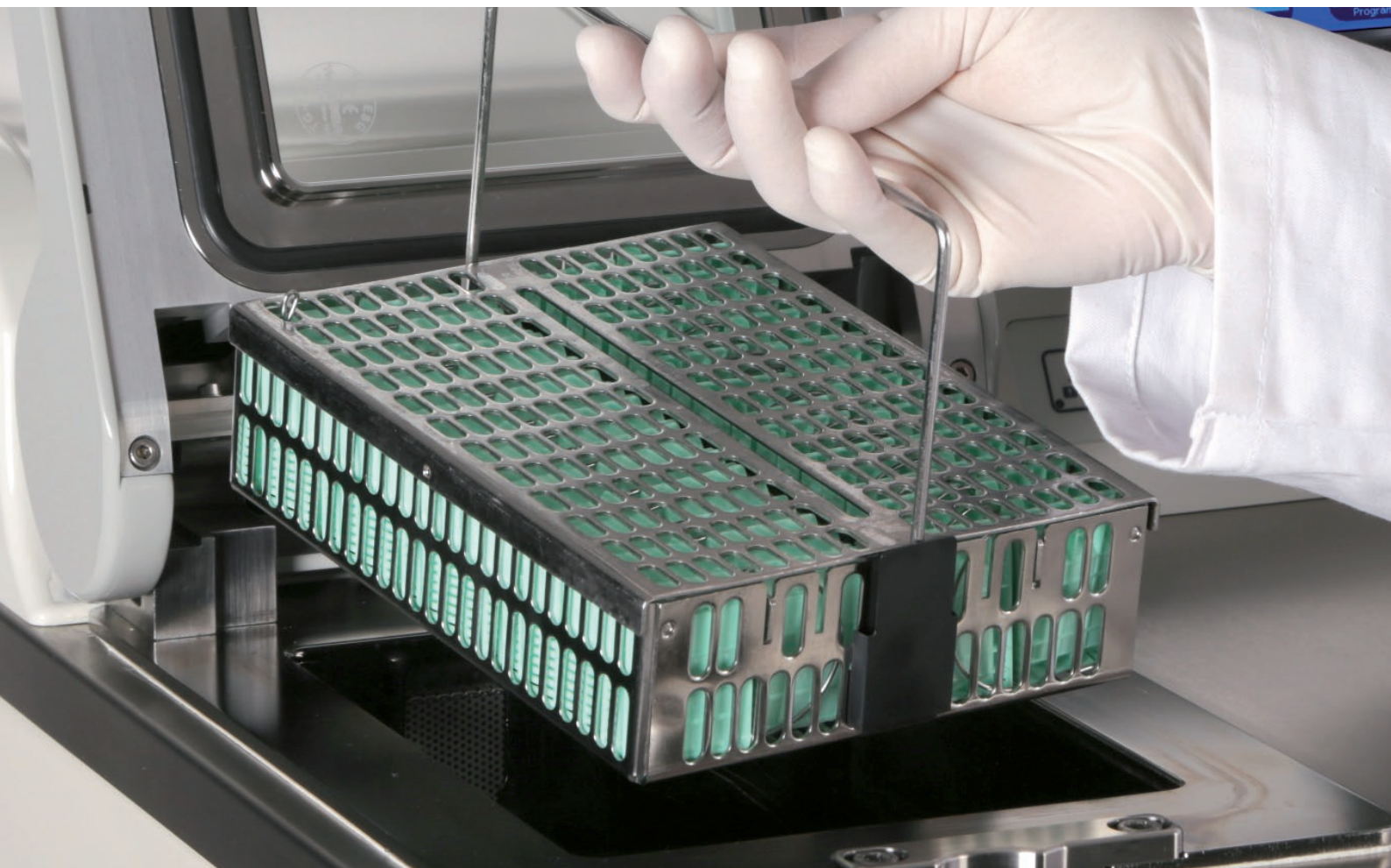


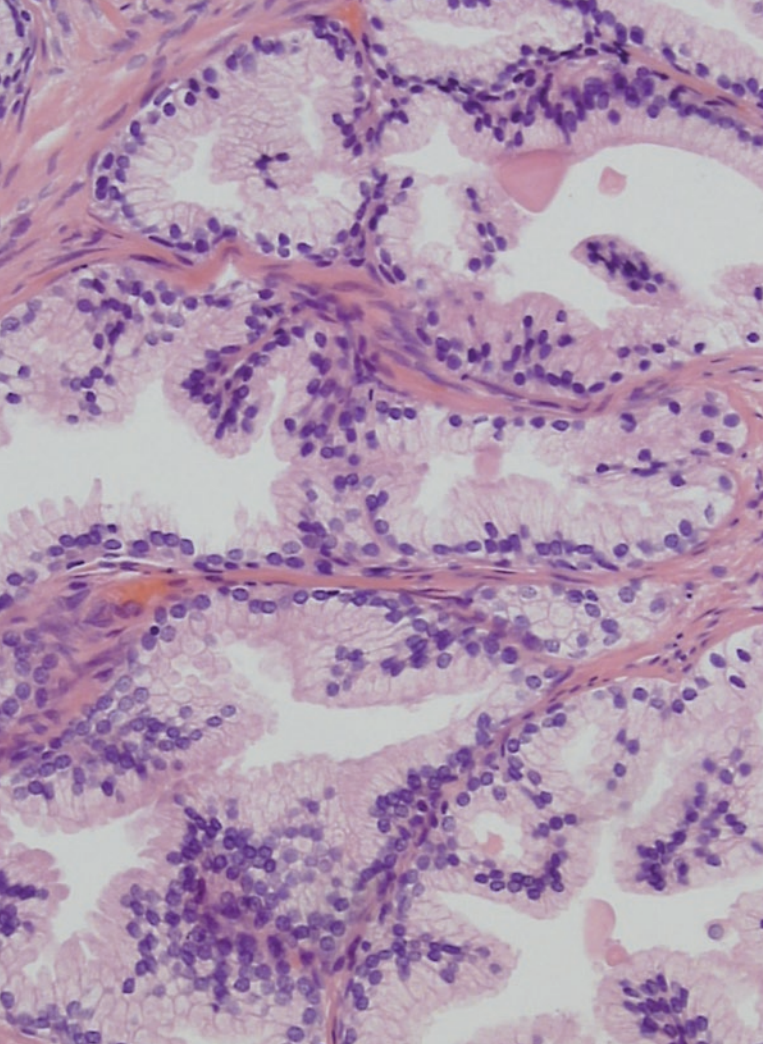
### Lean

Less waste, less work: reagents auto-rotate after optimal use, hot paraffin is exchanged without manual handling, and ready-to-use reagent bottles are comfortably exchanged.

### Improve laboratory workflow







# ASP6025 Tissue Processor **Technical Specifications**

Dimensions (L x W x H): 680 x 750 x 1500 mm (26.77 x 29.53 x 59.05 inch)  
 Weight (instrument only): approx. 210 kg (463 lbs)

Operating temperature range: +15 °C to +40 °C

## **Paraffin containers**

Paraffin melting station: 1  
 Number of paraffin baths: 3  
 Capacity: 5.0 L per paraffin bath  
 Paraffin Temperature: 50 °C to 65 °C

## **Processing Retort**

Capacity: max. 300 cassettes  
 Reagent volume: max. 4.6 L (up to fill level of third sensor, without specimen filling)  
 Temperature (processing reagents): ambient or 35 °C to 60 °C  
 Temperature (cleaning reagents): 50 °C to 67 °C  
 Fill time: approx. 90 seconds  
 Drain time: approx. 80 seconds  
 Impregnation vacuum: – 35 kPa  
 Infiltration pressure: +35 kPa  
 Fill vacuum: – 35 kPa to – 60 kPa  
 Drain pressure: +25 to +60 kPa

## **General**

System bottles: 9 (in the reagent cabinet)  
 RTU–bottles: 6 (in the drawer)  
 Condensate bottle: 1  
 Containers for cleaning solutions: 3 (not additional)  
 Bottle volume: 3.8 and 5.0 L

## **System setup**

Password status: supervisor/operator/service  
 Type of password: alphanumeric, freely selectable  
 Reagent management system (RMS): switch between RMS and concentration measurement  
 Nominal voltage: two factory-preset voltages (not user-adjustable),  
 120V ± 10% or 230V ± 10%  
 Nominal frequency: 50 to 60 Hz

Technical specifications subject to change.

The device ASP6025 tissue processor was developed, designed and manufactured to conform with the Directive 98/79/EC of the European Parliament and of the Council of 27 October 1998 on in-vitro diagnostic medical devices.



## TOTAL TISSUE PROCESSING SOLUTIONS

Efficiently prepare and process tissue for high-quality Routine, Special and IHC/ISH staining.

## CEREBRO Sample Tracking and Specimen ID

Clearly label cassettes and slides with Leica Biosystems' advanced printers then track specimens, protect patients and monitor workflow throughout your laboratory with the CEREBRO sample tracking system.

## Cassettes

Get the best results with cassettes including the ActivFlo range for maximum reagent exchange.

## Fixatives and Processing Reagents

Choose from a range of traditional and innovative fixatives, alcohols and other processing reagents.

## Paraffin wax

Leica Biosystems offers a wide range of high-quality paraffin waxes so you can find the formula that is just right for you.

## Embedding, Sectioning and Staining

Maintain quality and efficiency with Leica's range of histology instruments and associated reagents and consumables.

## LEICA BIOSYSTEMS

Leica Biosystems is a global leader in workflow solutions and automation, striving to advance cancer diagnostics to improve patients' lives. Leica Biosystems provides anatomic pathology laboratories and researchers a comprehensive product range for each step in the pathology process, from sample preparation and staining to imaging and reporting. Our easy-to-use and consistently reliable offerings help improve workflow efficiency and diagnostic confidence. The company is represented in over 100 countries and is headquartered in Nussloch, Germany.

Leica Biosystems – an international company with a strong network of worldwide customer services:

### North America Sales and Customer Support

North America	800 248 0123
---------------	--------------

### Asia/Pacific Sales and Customer Support

Australia	1800 625 286
China	+85 2 2564 6699
Japan	+81 3 5421 2804
South Korea	+82 2 3416 4500
New Zealand	0800 400 589
Singapore	+65 6779 7823

### Europe Sales and Customer Support

For detailed contact information about European sales offices or distributors please visit our website.

**Leica Biosystems brings together products, quality and support. Offering a complete solution that helps you advance workflows, enhance diagnostic clarity and deliver what really matters – better patient care.**



95.9729 Rev D · 03/2015 · Copyright © by Leica Biosystems, Nussloch, Germany, 2015. Subject to modifications. LEICA and the Leica Logo are registered trademarks of Leica Microsystems IR GmbH.

Paralast and ActivFlo are trademarks of Leica Biosystems, registered in Europe, USA and other countries.