

Advancing Cancer Diagnostics
Improving Lives



Time Matters, Trust in Every Slide

HistoCore SPECTRA Workstation

Automated staining and glass coverslipping workstation delivers immediately diagnosable slides enabling the fastest turnaround time to pathologists.



For In vitro diagnostic use.

The HistoCore SPECTRA Workstation is the first and only workstation with dual glass coverslip lines, enabling the highest throughput of up to 570 dried slides per hour, to meet the most demanding turnaround times.

Consistent Results and Reduction in Errors



Easy and safe operation with intuitive user interface and autostart protocol technology.



Unique dual robotic arms for faster processing.



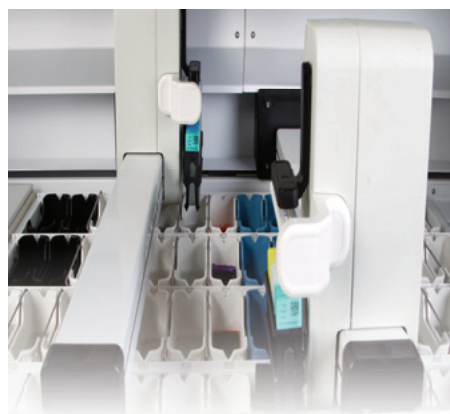
Reduce hands-on time and errors with the proprietary fill level scan and broken-glass detector technology.



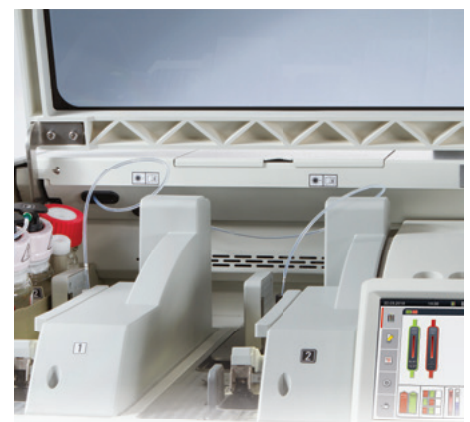
Ready-to-use consumables provide fast and easy exchanges to reduce potential errors.



Reduce reagent consumption and effort with RFID and single slide counter.



The unique dual-robotic arm technology enables increased efficiency by 20% compared to other market-leading platforms when processing H&E and special stains.



The first and only workstation in the market with dual glass coverslip lines enabling the highest throughput of up to 570 dried slides per hour.

Increased Throughput and Flexibility



Meet workload demands with the highest glass coverslipper throughput in the market.



SLIDE DRY TIME

Faster results allow for a much quicker diagnosis.



State-of-the-art staining and coverslipping quality helps reduce corrective actions, leading to decreased labor costs.



Keep your lab safe – sensor controlled continuous air extraction with external exhaust connection.



Maintain high throughput with the flexibility to process special stains and H&E stains simultaneously.

Diagnostic Confidence

Quality-consistent results from slide 1 to 1600 using Leica Biosystems validated protocols and specifically designed consumables.



Exceptional staining with Leica Biosystems validated stains and protocols.



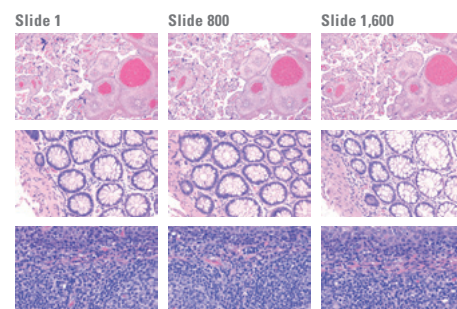
Market leading drying time provides faster delivery of slides.



Unmatched glass slide quality results in increased diagnostic efficiency.



Flexibility to choose between light, moderate and dark intensity staining systems.



Proven consistency from slide 1 to 1600.



HistoCore SPECTRA ST – SPECIFICATIONS

Instrument dimensions, hood closed	135.4 x 78.5 x 58.5 cm (53.3 x 30.9 x 23.1 in) (W x D x H)
Instrument dimensions, hood open	135.4 x 78.5 x 94.3 cm (53.3 x 30.9 x 37.1 in)
Weight	185 kg (407 lbs) (empty w/o reagents and accessories)
Weight with reagents	Approx. 220 kg
Throughput	Up to 330 H&E slides per hour
Capacity of slide rack	30 (5 slide rack for special stains)
Reagent cuvette stations	36
Cuvette volume	380 mL
Water flow cuvette stations	6
Stations in input and output drawer	5 each, continuous loading possible with max. 150 slides
Drying oven stations	6
Certifications	CE, c-CSA-us
Nominal supply voltages	100 to 240 V

Leica Biosystems is a global leader in workflow solutions and automation, integrating each step in the workflow from biopsy to diagnosis. Our mission of “Advancing Cancer Diagnostics, Improving Lives” is at the heart of our corporate culture. Our easy-to-use and consistently reliable offerings help improve workflow efficiency and diagnostic confidence.

HistoCore SPECTRA CV – SPECIFICATIONS

Instrument dimensions, hood closed	69 x 78.5 x 58.5 cm (27.2 x 30.9 x 23.1 in) (W x D x H)
Instrument dimensions, hood open	69 x 78.5 x 94.3 cm (27.2 x 30.9 x 37.1 in)
Weight	110 kg (242lbs) (empty w/o reagents and accessories)
Throughput	Up to 570 slides per hour
Usable specimen slides	In accordance with DIN ISO 8037/1 (76 mm x 26 mm)
Coverslip	HistoCore SPECTRA CV Coverglass
Coverslip quantity	300 coverslips per magazine
Coverslip size	24 mm x 50 mm
Mounting media	HistoCore SPECTRA CV X1, Xylene based
Specimen slide holders	30 specimen slides
Nominal supply voltages	100 to 240 V AC +10%

Validated HistoCore SPECTRA H&E STAINING SYSTEMS

Staining intensity	S1 (light to moderate) S2 (moderate to dark)
Capacity	1600 slides
On-stainer expiration	7 days
Staining system components	SPECTRA Hemalast SPECTRA Hematoxylin SPECTRA Differentiator SPECTRA Bluing SPECTRA Eosin
Staining component volume	380 ml/bottle