

WELCOME TO FOLLOW



SEESHEEN ENDOSCOPE

SEESHEEN | TK-VETKIT



TK VETKIT CO.,LTD.

ADD:Plant 1, No. 199, Shui'an 1st Road, Xiangzhou District, Zhuhai

TEL:+86-755-23761871

EMAIL:intl@seesheen.com

WEB:www.seesheen.com

C-TKZH-202306-V2.2

SEESHEEN | TK-VETKIT

ALL IN ONE VETERINARY ENDOSCOPE SYSTEM

- Medical management system
- Compatible with 3 types of endoscopes
- Complete specification and function



Gastroscope

+



Laparoscope

+



Bronchoscope

Probe A: Gastroscope

All In One Endoscope System

LED Light Source L-10

Features

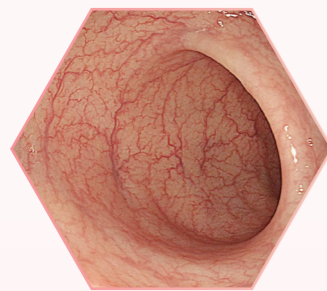
- High brightness LED, good color restoration and long operation life.
- Touch-screen control, friendly interactive interface.
- Brightness with 9 levels adjustment, suitable for a variety of scenes.
- All in one light source + water/air pump.



Specification

Model	Power Voltage	Light	Air Pump Pressure	Diameter	Brightness	Air Pump
L-10	100-240V AC	LED	45Kpa-65Kpa	φ8.5mm	9 levels	3 levels

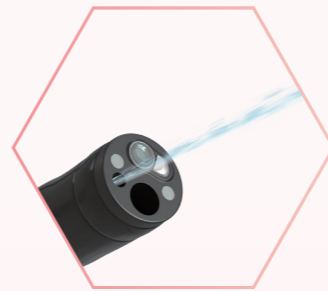
Features



HD Image



Wide Angle



Water Jet



Angle Lock



Big Forceps Channel



② Photo
① Video
③ Freeze/White Balance

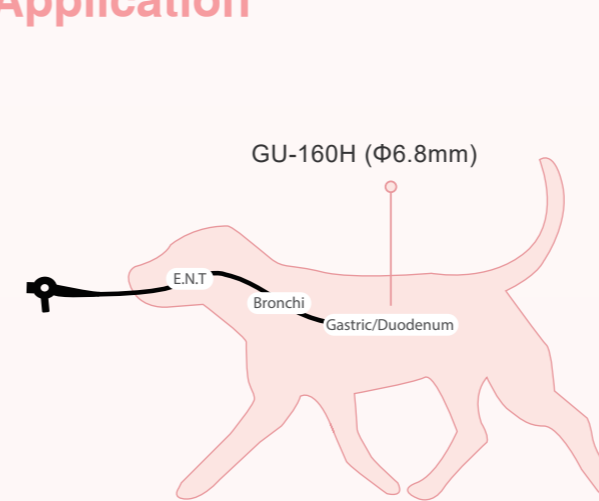
Intelligent Image Processor D-1322

Features

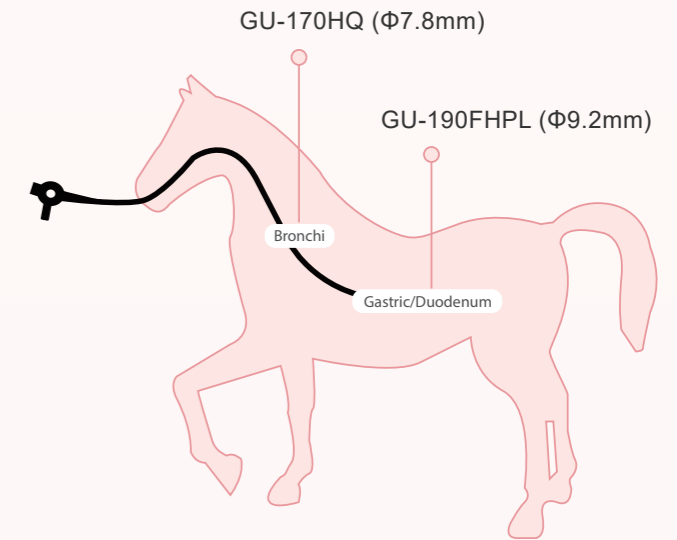
- 21.5 inch touch-screen image processor
- Full HD 1920×1080
- Medical record management system
- Support wire and wireless network



Application



- Upper and lower GI tract work in companion animals (gastroscope and colonoscope) and airways investigations in equine(upper airways scope)



- Ideal for numerous large animal applications, including gastroscopy, colonoscopy, esophagoscopy, tracheoscopy, hysteroscopy, rhinoscopy, pharyngoscopy and laryngoscopy.

Specification

Model	Outer Diameter	Working Channel	Working Length	Up/Down	Left/Right	View Angle	Function Keys	Water Jet	Resolution
GU-160H	6.8mm	2.2mm	1500mm	U210°, D130°	L100°, R100°	120°	1	/	HD
GU-170HQ	7.8mm	2.8mm	1500mm	U210°, D130°	L100°, R100°	120°	3	/	HD
GU-170FH	7.8mm	2.2mm	1500mm	U210°, D130°	L100°, R100°	140°	3	/	FHD
GU-190FH	9.2mm	2.8mm	1500mm	U210°, D130°	L100°, R100°	120°	1	/	FHD
GU-190FHPL	9.2mm	2.8mm	3000mm	U180°, D130°	L100°, R100°	140°	3	Yes	FHD
GU-1B0FHPL	11.5mm	3.2mm	3500mm	U180°, D130°	L100°, R100°	140°	3	Yes	FHD

Probe B: Laparoscope

All In One Endoscope System

LED Light Source L-10

Features

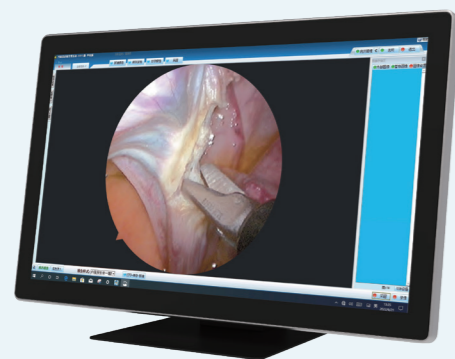
- High brightness LED, good color restoration and long operation life.
- Touch screen control, friendly interactive interface.
- Brightness with 9 Level adjustment, suitable for a variety of scenes.
- All in one light source +water/air pump.



Specification

Model	Power Voltage	Light	Air Pump Pressure	Diameter	Brightness	Air Pump
L-10	100-240V AC	LED	45Kpa-65Kpa	φ8.5mm	10 Levels	3 Levels

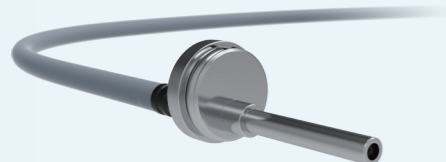
Intelligent Image Processor D-1322



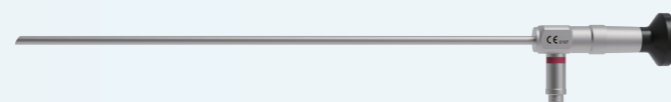
Features

- 21.5 inch touch-screen image processor
- Full HD 1920×1080
- Medical record management system
- Support wire and wireless network

TK-VETKIT Light Cord



Rigid Scope



TK-VETKIT Camera Head:CM-U12



Features

- Ergonomic design with lightweight, reduces surgeon fatigue during long procedures
- IP67 Ingress Protection Rating,dust-proof and waterproof
- Two-megapixel camera, full HD 1080P resolution
- Camera head compatible with any rigid scope
- Multi-function buttons, easily capturing and freezing FHD photos

Application

Laparoscopy for dogs, cats, cattle, sheep, horses, pigs, laboratory animals, wild animals and some aquatic animals.



Specification



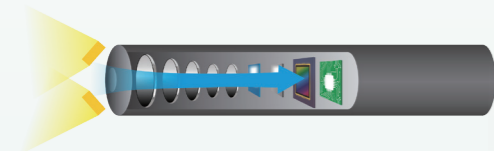
NO.	Components	Model	Description
1	Camera Head	CM-U12	Full HD 1080P
2	Light Cord	LC-10	Compatible with any brand of rigid scope
3	Rigid Scope	LC-1530	Laparoscope 5.0mm diameter , 290mm working length, 30 degree
4	Rigid Scope	LC-1500	Laparoscope 5.0mm diameter , 290mm working length, 0 degree

Probe C: Bronchoscope

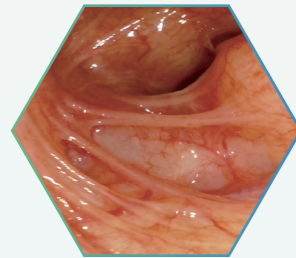
All In One Endoscope System

CMOS+LED Technology

Non-fiber design makes it durable and easy for maintenance.



Features



High Definition
Perfect Image



CMOS+LED
No Fiber

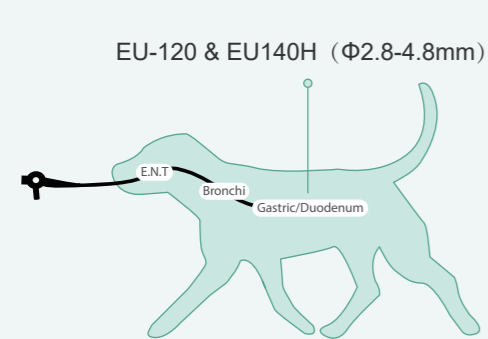


Big Channel
1.2 -2.8mm

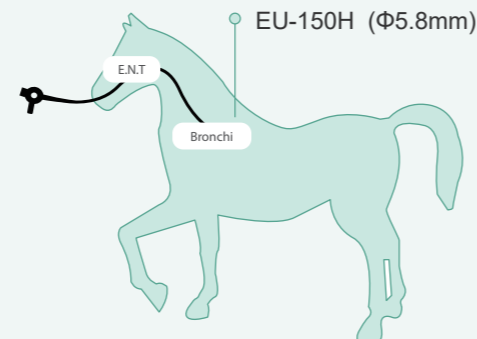


Multi-function Buttons
①White Balance ②Brightness ③Freeze

Application



Companion animals upper and lower respiratory tract.



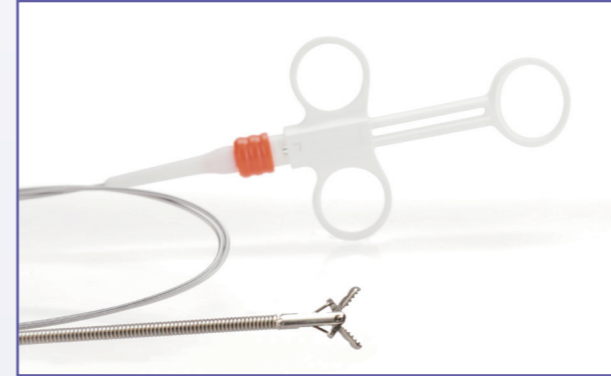
Large animal upper and lower respiratory tract.

Specification

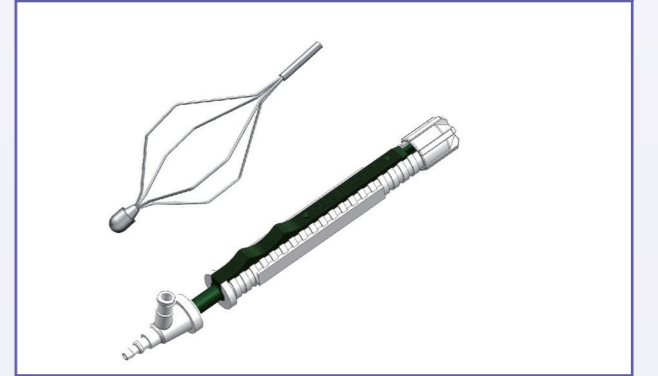
Model	Insertion Tube	Working Channel	Working Length	Bending	Rotation	View Angle
EU-120	2.8mm	1.2mm	610mm	U210°, D130°	L120°, R120°	120°
EU-130	3.8mm	1.5mm	1000mm	U180°, D130°	L120°, R120°	120°
EU-140H	4.8mm	2.0mm	1000mm	U180°, D130°	L120°, R120°	120°
EU-150H	5.8mm	2.8mm	1500mm	U180°, D130°	L120°, R120°	120°

Disposable Endoscopic Accessories

Disposable Endoscopic Biopsy Forcep



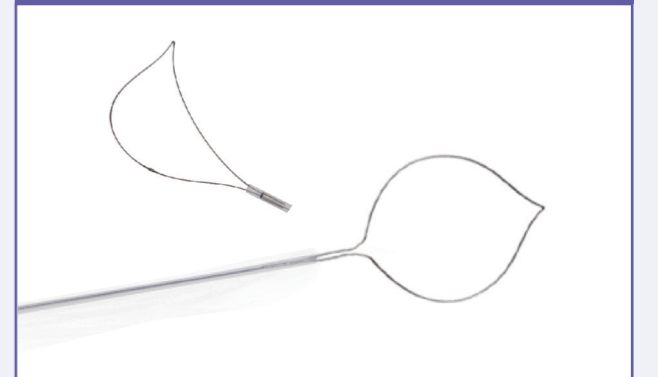
Disposable Endoscopic Basket Grasping Forcep



Disposable Endoscopic Spary Catheter



Disposable Polypectomy Electric Snare



Disposable Endoscopic Retriever



Disposable Endoscopic Grasping Forcep



Cooperative Customers

