

From Eye to Insight



High Definition Cameras for Compound Microscopes

IMAGE SHARING, CAPTURING, AND ARCHIVING MADE EASY

Leica ICC50 W (Wi-Fi) and
Leica ICC50 E (Ethernet)



GOOD CONNECTION!

FAST HIGH RESOLUTION LIVE IMAGING

The ability to share, capture, and archive images is an important part of the science laboratory. Keep students on topic and maximize learning time with the Leica ICC50 W wireless HD camera and the Leica ICC50 E network-capable camera. The complete system allows the user to view specimens on the display and through the binocular tube, with or without a computer connection for versatile science education.

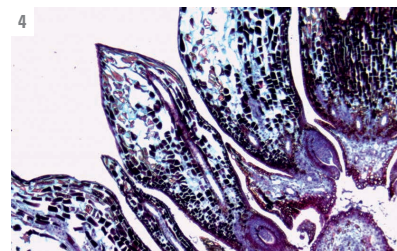
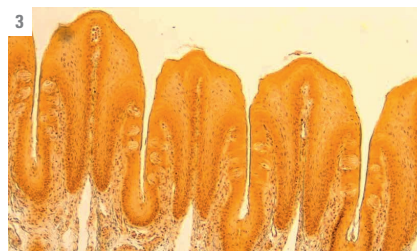
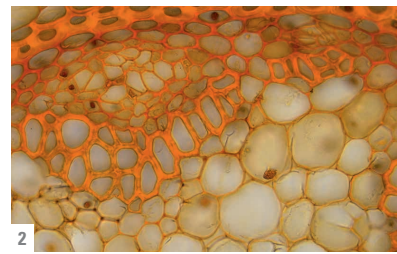
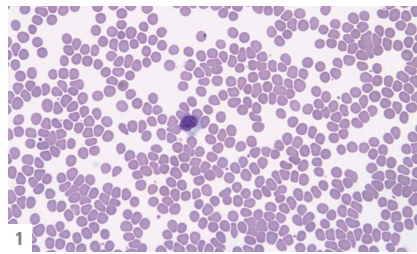
SEAMLESS DESIGN

The Leica ICC50 W or Leica ICC50 E fits between the microscope stand and viewing tube without an additional video or photo tube. It is designed to perfectly match newer generation Leica DM-series microscopes.

EASY TO OPERATE

The Leica ICC50 W or Leica ICC50 E provides excellent image sharpness, brightness, and color impression. In addition, the user can work with the basic presets or adjust the camera's parameters as desired. Pushing the onboard buttons of the camera quickly switches camera modes, performs white balancing, or saves an image to an SD card.

- 1: Human Blood
- 2: Convallaria – Lily of the Valley
- 3: Taste Buds
- 4: Pine



LEICA ICC50 W AND LEICA ICC50 E

ADVANTAGES

- › In Ethernet mode, the connection to the camera is provided through your own network, allowing a maximum number of users to connect to the camera. To use this to full extent, all devices have to be on to same network as the microscope.
- › In USB mode you can connect your PC directly via USB cable to the camera, which is helpful when you aim for fastest live images e.g. of moving samples.
- › Computer users can use the Leica Imaging software to connect to the camera and work with the images. For PC use Leica Application Suite software, and use Leica Acquire for MAC.
- › Use lots of options with Leica AirLab App: It enables camera setup, annotations, measuring, image capture, and sharing to email, photo folders, or other social media connections. Leica AirLab App is available free of charge for Android and iOS devices.
- › Stay flexible if there is no PC or mobile device around: Just capture images directly onto a memory card.
- › Fine-tune camera settings conveniently, capture images onto the SD card, and view the SD card gallery – all possible with the remote.
- › Project your images: Use the HDMI port for screen projections or output to HD screens.
- › You don't need any extra power cables: The camera is powered directly from the microscope stand with a USB cable.



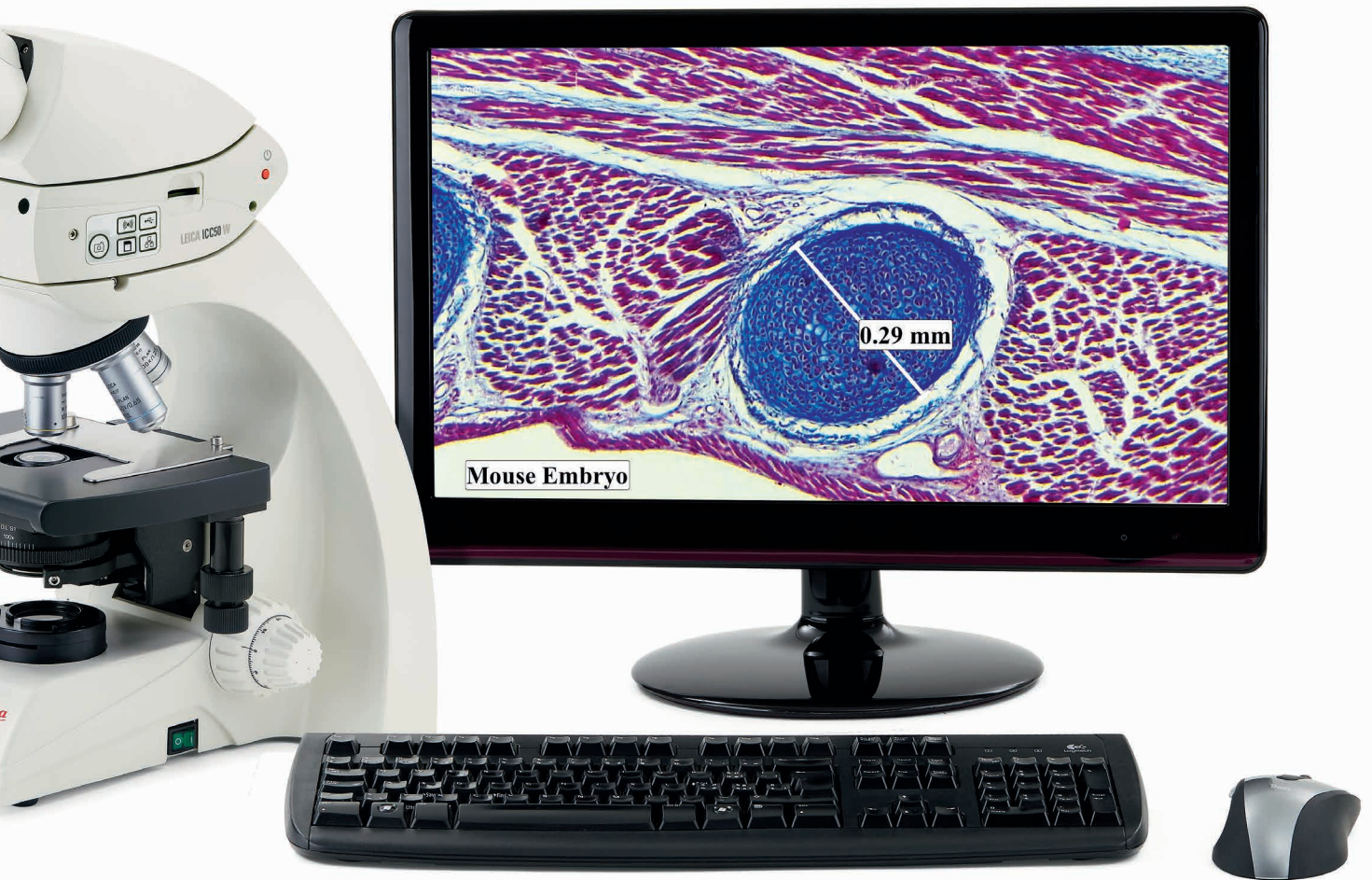


Students can connect to the Leica ICC50 W either through its own **internal Wi-Fi signal** using Wi-Fi mode or through the facilities' network using Ethernet mode.

Note: The quantity of mobile device connections and their stability depends on the Wi-Fi traffic and network performance in the environment.



The ICC50 E **exclusively** uses your facilities' **network (WLAN or LAN)** to allow students to connect to the camera. This is an ideal solution if you don't want to add additional Wi-Fi access points to your network.



Leica DM750 microscope with integrated Leica ICC50 W camera, RC remote control, and full HD monitor

- 

**MP4
Movie**
- 

**Remote
Control**
- 

**Thumbnail
Gallery**
- 

**Free Hand
Annotation**
- 

**Windows
Support**
- 

**OSX
Support**

SPECIFICATIONS

LEICA ICC50 W / LEICA ICC50 E

Weight	700 g (camera only)
Height	50 mm
Exposure time	1 msec – 500 msec
Live image	30 fps maximum – depends on mode and resolution setting
Full frame image acquisition	5.0 megapixels max.
Movie clip	1,920 x 1,080 max.
Color depth	24-bit
Data format	JPEG / TIFF / BMP / MP4 (choices depend on capture device)
Operating systems	Windows 7, 8, Windows Vista, Macintosh OS X, Mobile devices (iOS 7, 8 and Android 4.2+)
Software available	Leica AirLab (mobile devices), Leica LAS EZ (PC), Leica LAS (PC), Leica Acquire (Mac)
Min. computer config.	PC / Mac, Intel Core 2 Duo, > 2.4 GHz, 4 GB RAM, 24-bit graphics, 1,248 x 1,024
Min. display specification	1,920 x 1,080 resolution, HDMI connection, DVI connection possible with HDMI/DVI adapter cable (not provided)

Note: The quantity of mobile device connections and their stability depends on the Wi-Fi traffic and network performance in the environment.

MECHANICAL AND OPTICAL INTERFACES

Fits between viewing tube and microscope stand via standard Leica Microsystems dovetail interface

Light distribution optical 50 % / camera 50 %

Internal video magnification 0.5x

ELECTRONIC INTERFACES

Computer USB 2.0, standard USB plug type B

High Definition connector HDMI 1.3, standard HDMI plug type A

Ethernet RJ45 standard

Integrated slot SD (Secure Digital) card 1 – 32 GB

WiFi 802.11n standard (only for Leica ICC50 W)

On/Off switch

Pinhole service switch

LED's indicating camera status

OTHER

Power via USB cable to 5 V/1.5 A+ power supply (stand or external)

CE Declaration of Conformity available

ORDERING NUMBERS

13 613 735	Leica ICC50 W camera – includes camera, USB cable, HDMI cable, disc with LAS EZ and Leica Acquire software
13 613 740	Leica ICC50 E camera – includes camera, USB cable, HDMI cable, disc with LAS EZ and Leica Acquire software
13 613 730	USB power supply – 5 V/2 A
10 450 805	Wireless remote camera control for fine tuning the HD image and making additional camera settings when no computer is being used
13 613 709	Photoframe reticle for use with 13 613 532 focusing eyepiece when capturing images on an SD card without a display for preview

CONNECT
WITH US!

